



The ROYAL  
SOCIETY of  
MEDICINE

Registered Charity 206219  
[www.rsm.ac.uk](http://www.rsm.ac.uk)



Registered Charity 279651  
[www.womens-health-concern.org](http://www.womens-health-concern.org)

Invite you to their

---

# 20th Annual Symposium on Women's Health

---

Friday 16 October 2009

at

The Royal Society of Medicine

London W1G 0AE



ACCREDITED BY THE ROYAL SOCIETY OF MEDICINE AND  
THE FACULTY OF SEXUAL AND REPRODUCTIVE HEALTHCARE

# Programme

## Women's Health Concern 20th Annual Symposium

Royal Society of Medicine, London W1G 0AE

Friday 16 October 2009

09.00	Registration, exhibition viewing and coffee
09.30	Welcome and introduction <i>Chairman, Dr John Stevenson</i>
09.40	Low eGFR: But is Kidney Function really Abnormal? <i>Dr Chris Farmer</i>
10.20	Bio-identical Hormones and other Complementary Medicines: Science Fact or Science Fiction? <i>Professor Margaret Rees</i>
11.00	Coffee
11.30	The Gerald Swyer Memorial Lecture*: Heart Disease in Women <i>Professor Peter Collins</i>
12.10	Teenagers and Sex: Is it Catching? <i>Dr Gillian Vanhegan</i>
12.50	Lunch
14.00	What are the Real Risks for Breast Cancer? <i>Professor Richard Farmer</i>
14.40	Arthralgia and Arthritis: When is an Ache really a Disease? <i>Dr Mike Irani</i>
15.20	Tea
15.50	Osteoporosis Therapies: Panaceas or Poisons? <i>Dr John Stevenson</i>
16.30	Your questions answered <i>Dr John Stevenson</i>
16.45	Close

*Sessions and speakers subject to change*

*\*The late Dr Gerald Swyer was internationally recognised for his early work on the development of the contraceptive pill; the first endocrine and fertility clinics in London; and his pioneering research on hormone replacement therapy.*

*He was Chairman of Women's Health Concern from 1980-1993. The Dr Gerald Swyer Memorial Fund was set up in 1995 as a lasting tribute to him.*

# Meeting Information

Royal Society of Medicine, London W1G 0AE Friday 16 October 2009

## Registration

- **Online** - with credit/debit card. Register via on the website via secure transaction at [www.rsm.ac.uk/diary](http://www.rsm.ac.uk/diary)
- **By post** - complete the registration form overleaf and post it - to reach us before Friday 9 October - to: Academic Department, The Royal Society of Medicine, 1 Wimpole Street, London W1G 0AE. Payment is required four working days before the Symposium. Cheques should be payable to 'The Royal Society of Medicine'.
- Please book early as space is limited
- Note: Fees are non-refundable

## Travel

- Major NCP Car Parks are within yards of The Royal Society of Medicine, in Cavendish Square and Marylebone Lane
- Tube stations nearest to The Royal Society of Medicine are Bond Street and Oxford Circus

## Accommodation

- A list of nearby hotels is available on request

## Exhibition

- A Medical Exhibition, including leading pharmaceutical companies, will take place throughout the Symposium

## Training Accreditation

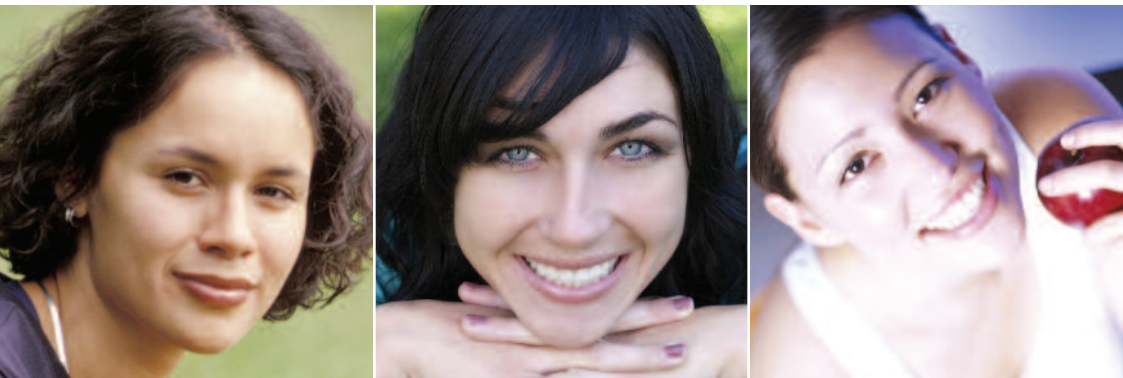
- CPD and CME Training Plans: delegates will be given a certificate which confirms their attendance at the Symposium
- The Symposium has been accredited by The Royal Society of Medicine and the Faculty of Sexual & Reproductive Health Care.

## Further Information

- Website: [www.rsm.ac.uk/diary](http://www.rsm.ac.uk/diary)
- For registration enquiries please contact the Academic Department at the Royal Society of Medicine on 020 7290 2965 or email [events@rsm.ac.uk](mailto:events@rsm.ac.uk)
- For general enquiries please contact the Conference Manager, Barbara Halstead, on 01628 524009 or email [bhalstead@womens-health-concern.org](mailto:bhalstead@womens-health-concern.org)

## Terms and Conditions

Places are only guaranteed upon written confirmation. No refunds are provided. Substitutions may be made at any time without charge. Cheques must be in sterling drawn on a UK bank account. Acceptance is at the discretion of the event organiser. Registrations will not be accepted over the telephone. In the event that the RSM cancels the meeting, liability will be limited to registration fees already paid to the Society for the meeting.



## Confidential Advice for your Patients

---

### Gynaecological or Sexual Health Questions?

Confidential Email Advice Service  
[advice@womens-health-concern.org](mailto:advice@womens-health-concern.org)

Staffed by qualified gynaecological and menopause nurse specialists backed by a team of medical advisers to answer your patients' health questions and concerns.

#### Please return to:

20th Annual Symposium on Women's Health  
Women's Health Concern  
c/o Academic Department  
The Royal Society of Medicine  
1 Wimpole Street  
London  
W1G 0AE



The ROYAL  
SOCIETY of  
MEDICINE

Women's  
Health  
Concern



## Presenters

---

- **Professor Peter Collins**  
Consultant Cardiologist, Royal Brompton Hospital, London

---

- **Dr Chris Farmer**  
Consultant Nephrologist, Kent and Canterbury Hospital

---

- **Professor Richard Farmer**  
Emeritus Professor of Epidemiology, University of Surrey

---

- **Dr Mike S Irani**  
Consultant Rheumatologist, Ashford Hospital, Ashford

---

- **Professor Margaret Rees**  
Consultant Gynaecologist, John Radcliffe Hospital, Oxford. Editor in Chief, Maturitas. Member of the Women's Health Concern Medical Advisory Panel

---

- **Dr John C Stevenson**  
Consultant Metabolic Physician, Royal Brompton Hospital, London. Chairman Women's Health Concern. Member of the Women's Health Concern Medical Advisory Panel

---

- **Dr Gillian Vanhegan**  
Medical Director, Brook Advisory Centre, London

---

There will be a Medical Exhibition running throughout the day featuring leading pharmaceutical companies

# Registration Form

The registration fee includes registration for the Symposium and all catering – and is non-refundable. Please make cheques payable to The Royal Society of Medicine. Receipts and acknowledgements will be issued prior to the event.

**General Practitioners, Clinic Doctors, Hospital Doctors**

**FEE £165**

**Nurses**

**FEE £115**

I am a: G.P.  Clinic Dr.  Hospital Dr.  Nurse  Other Health Professional

Register online: [www.rsm.ac.uk/diary](http://www.rsm.ac.uk/diary)

**Payment by cheque:** I enclose payment of £ \_\_\_\_\_ by cheque made payable to  
**The Royal Society of Medicine**

**Payment by credit or debit card:** I would like to pay by

Visa / Mastercard / Amex / Switch / Delta *(please delete as applicable)*

Card/Switch Number

Start Date /  Expiry Date /  Issue N° (Switch only)

Card Security Code\*  *\*This is the 3 (or 4 for Amex) digit code in the signature area on the back of your card on the far right hand side.*

Cardholder's Signature \_\_\_\_\_

*Please use a separate sheet to provide the cardholder's name and address, if different from information provided on the form below. Payment is required 4 working days before the meeting.*

**Name:** *(as it should appear on your badge/certificate)*

**(PLEASE PRINT CLEARLY)**

**Address: Work/Home** *(please specify)*

**Town**

**Postcode**

**Daytime Telephone**

**Email Address**

**Special Dietary Requirements**

A donation to support the core services of Women's Health Concern would be much appreciated. You can donate online at [www.womens-health-concern.org](http://www.womens-health-concern.org) or via [www.justgiving.com/whc](http://www.justgiving.com/whc) Alternatively you can make a gift aided donation on the day via cheque made payable to **Women's Health Concern** or in cash.

I would like to continue to receive relevant information and correspondence from Women's Health Concern

I would like to receive information regarding membership of The Royal Society of Medicine  *(please tick)*

Please return this page to: Women's Health Concern, c/o Academic Department,  
The Royal Society of Medicine, 1 Wimpole Street, London, W1G 0AE.